

Straumann® Pro Arch
More than a fixed
full arch solution.
A reason to smile again.



Why are dental implants important?

- To help you maintain a healthy and youthful appearance and smile
- To restore and preserve facial structure
- To provide a secure and long-term dental solution
- To help restore normal teeth function, so you can eat what you want when you want
- To improve your quality of life



Before

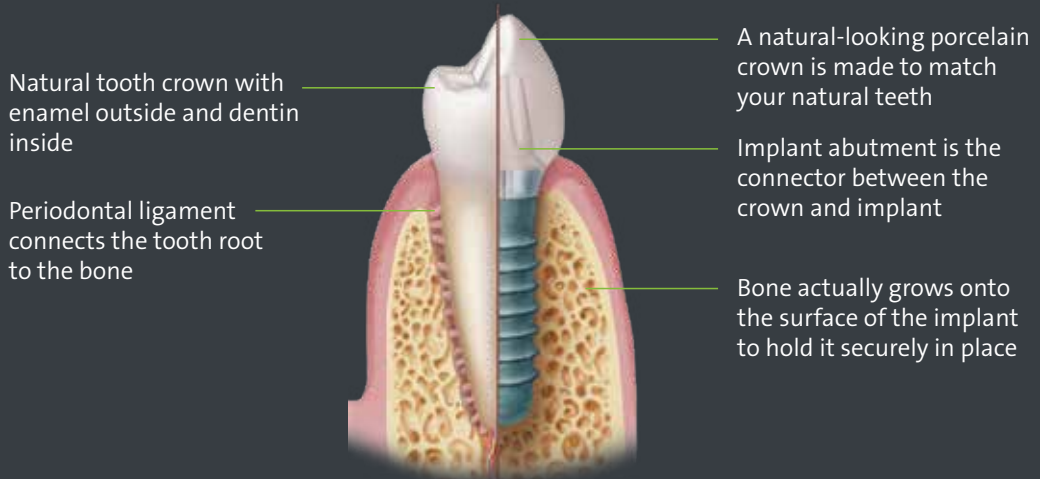


After

The beauty of dental implants

The best way to replace a tooth is to mimic it as closely as possible. Dental implants do just that. Only dental implants replace the entire tooth structure: the root and the crown. This “close to nature” approach has important benefits:

- Feels and looks like a natural tooth
- Helps prevent and minimize bone loss
- Helps preserve surrounding teeth
- Improves appearance and quality of life



Your treatment options to complete tooth replacement

IMPLANT-RETAINED DENTURE

Implant-retained dentures are removable by the patient



STRAUMANN® PRO ARCH

Implant-supported, screw-retained restorations are removable by your dentist for maintenance





4 steps to your new smile

1

Examination and planning

Your expectations and health conditions are clarified.* They are the basis for the treatment plan that suits you the most.

2

Surgery and temporization

The implants are placed and an impression is taken. According to your individual needs, your doctor may choose to create temporary teeth immediately.

3

Impression-taking

After healing, an impression is made. The final restoration will be fabricated and secured to the healed implants in your mouth.

4

Creating your new smile

We now begin the process of creating your final smile. You will continue to wear your temporary teeth during this restorative phase. Since this restoration is being customized, your dentist will detail the next steps required for your new smile.

Treatment steps to implant-retained dentures

Implant-retained dentures are removable by the patient.



1
Edentulous patient with inadequate lip support and limited ability to chew.



2
Four dental implants placed to retain lower denture in place.



3
Lower denture prepared for attachment to dental implants.



4
Locator® overdenture abutments in place.



5
New mandibular overdenture.



6
New mandibular overdenture.



7
Upper and lower implant retained dentures.



8
Improved facial esthetics and ideal function with new overdentures.

Straumann® Pro Arch

Examination & Planning

Implant-supported dentures that include a screw-retained restoration are removable by your dentist only for maintenance.



Current patient situation



CT Scan



Digital treatment planning



Intraoral Scanning

Straumann® Pro Arch Surgery & Provisionalization



Before surgery



Teeth extracted prior to implant placement



Provisional restoration in place



Delivery of implants

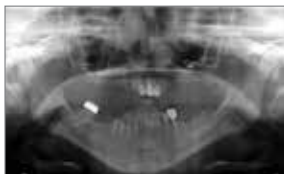


Implants in place and ready for provisional denture



Patient on day of surgery

Final Restoration



Before



Teeth extracted prior to implant placement



After



Final restoration in place

Home hygiene tips to take care of your new smile

- Regular daily oral hygiene care is the first step to taking care of your new smile. The time to start is now!
- Just like natural teeth, dental implants require regular check-ups and thorough, daily oral hygiene care.
- If you received an **implant-retained denture (removable)** – this means you will remove your prosthesis daily for cleaning.
- If you received an **implant-supported denture (fixed)** – this means your doctor will remove it for maintenance. Between regular check-ups, you will brush and care for your prosthesis just as you would with your natural teeth.
- In addition, your dentist will provide a detailed list of maintenance steps and tools.





Why Straumann®?

- More than 20 million Straumann implants sold worldwide¹
- More than 60 years of experience and research
- Lifetime limited warranty for all Straumann implants²
- More than 35 years of clinical documentation on implants
- Every one second someone is treated with Straumann product
- #1 implant manufacturer worldwide

¹Straumann Annual Report 2017

²Straumann Guarantee® <http://www.straumann.us/straumannguarantee>

Contraindications

Inadequate bone volume and/or quality, local root remnants, serious internal medical problems, uncontrolled bleeding disorders, inadequate wound healing capacity, not completed maxillary and mandibular growth, poor general state of health, uncooperative, unmotivated patient, drug or alcohol abuse, psychoses, prolonged therapy-resistant functional disorders, xerostomia, weakened immune system, illnesses requiring periodic use of steroids, uncontrollable endocrine disorders. Allergies or hypersensitivity to chemical ingredients of materials used: titanium-zirconium alloy or titanium (Grade 4).

Cautions/Precautions

A careful clinical and radiological examination of the patient should be performed prior to surgery to determine the psychological and physical status of the patient. Special attention should be given to patients who have local or systemic factors that could interfere with the healing process of either bone or soft tissue or the osseointegration process (e.g., bone metabolism disturbances, previously irradiated bone in the head or neck area, diabetes mellitus, anticoagulation drugs/hemorrhagic diatheses, bruxism, parafunctional habits, unfavorable anatomic bone conditions, tobacco abuse, untreated periodontal diseases, acute infection of implant site, temporomandibular joint disorders, treatable pathologic diseases of the jaw and changes in the oral mucosa, pregnancy, inadequate oral hygiene).

To access Instructions For Use visit <http://ifu.straumann.com>

* Every surgical procedure carries potential risks. You should always consult with a dental professional prior to treatment. Potential risk factors may vary depending on medical or other conditions of each patient. For example, poor oral hygiene or limited healing of the wound due to pre-existing conditions (e.g. diabetes, osteoporosis) may reduce the odds of the implant remaining in place.

Straumann North American Headquarters

ifu.straumann.com

Straumann USA, LLC

60 Minuteman Road

Andover, MA 01810

Phone 800/448 8168 (US) • 800/363 4024 (CA)

Fax 978/747 2490

www.straumann.us/blx • www.straumann.ca/blx